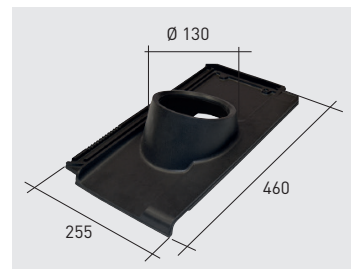


Q118*K Data Sheet

Manufacturer: Cerámica La Escandella S.A.
Production site: Agost (Alicante) - Spain
Brand name: Innova/Vienna clinker fireplace support **Q118*K**

Dimensions*
A 460 mm / 18.1 "
B 255 mm / 10 "
C 130 mm / 5.1 "



Weight piece 3,55 kg / 7.8 lbs
Units per pallet 21

*The tile dimensions indicated in this chart allow a tolerance of approximately +/-2%

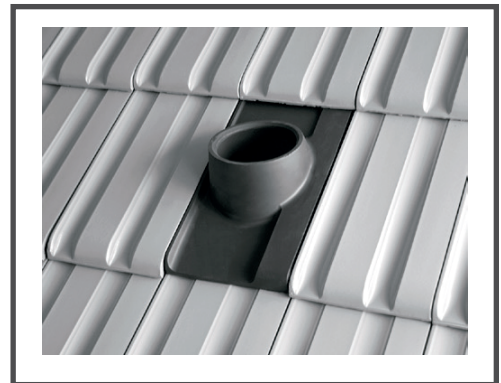
Structural characteristics:	UNE EN 1304	≤ 2,5
Impermeability (cm ³ / cm ² *day):	UNE EN 539-1	Mean value ≤ 0,5 ; Individual value ≤ 0,6
Froast resistance:	UNE EN 539-2	≥ 150
Fire reaction performance:	UNE EN 13501-1	A1
External fire performance:	UNE EN 13501-5	B _{roof}

Additional information

Surface finishes: Surface decoration with colored slips

Fireplace: Q121*K

Pre-hole: To avoid breakage of the special pieces, it is necessary to drill the pre-hole with a screw (ø max. 4mm) before nailing or drill the stone directly.



Resistencia a la helada



Impermeabilidad



Resistencia a la flexión



Características geométricas



Conforme a la norma europea

