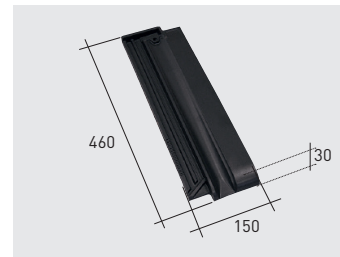


## Q119\*K Data Sheet

Manufacturer: Cerámica La Escandella S.A.  
 Production site: Agost (Alicante) - Spain  
 Brand name: Innova/Vienna klinker half tile **Q119\*K**

Dimensions\*  
**A** 460 mm / 18.1 "  
**B** 150 mm / 5.9 "  
**C** 30 mm / 1.2 "



Weight piece 2 kg / 4.4 lbs  
 Units per pallet 200

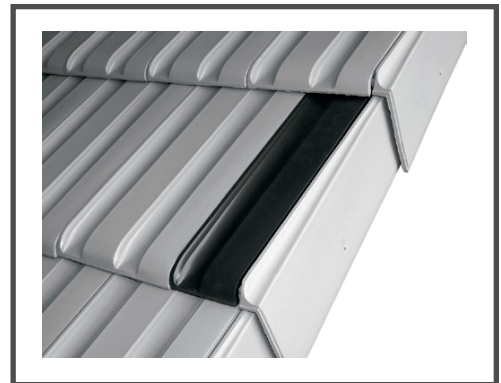
\*The tile dimensions indicated in this chart allow a tolerance of approximately +/-2%

Structural characteristics:	UNE EN 1304	≤ 2,5
Impermeability (cm <sup>3</sup> / cm <sup>2</sup> *day):	UNE EN 539-1	Mean value ≤ 0,5 ; Individual value ≤ 0,6
Frost resistance:	UNE EN 539-2	≥ 150
Fire reaction performance:	UNE EN 13501-1	A1
External fire performance:	UNE EN 13501-5	B <sub>roof</sub>

### Additional information

Surface finishes: Surface decoration with colored slips

Pre-hole: To avoid breakage of the special pieces, it is necessary to drill the pre-hole with a screw (ø max. 4mm) before nailing or drill the stone directly.



Resistencia a la helada



Impermeabilidad



Resistencia a la flexión



Características geométricas



Conforme a la norma europea

